

How to save your PDF

PDF Tips

There are many ways to create a PDF file, but not all of them work well for professional high-quality printing. The way in which you create a PDF can dramatically alter the quality of your finished piece. Please refer to the following guidelines to ensure the best possible print quality.

Save Your File with Exact P4LC's PDF Specifications

P4LC has an optional PDF job options file available for download. This .joboptions file is compatible only with Adobe Creative Suite programs and you will need Adobe Distiller to use this. With this job options file, PDFs will be created with exact print specifications for P4LC.

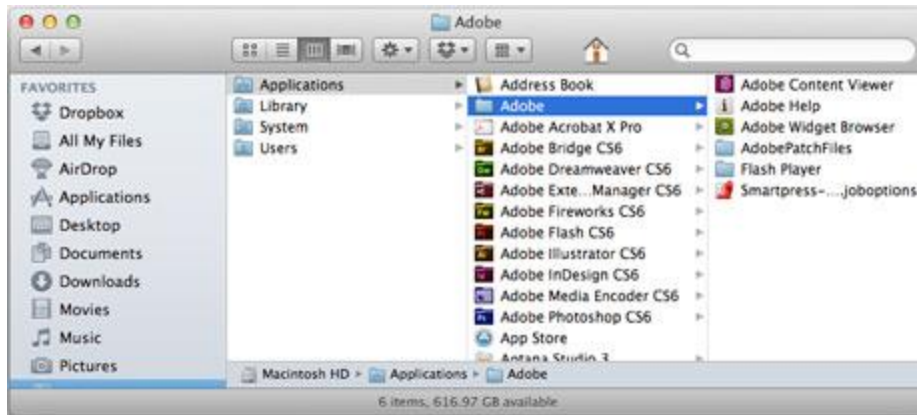
Please note: This .joboptions file will only work if you have Adobe Distiller.

Download the .zip file here:

PDF '.joboptions' File For PC and Mac ZIP (3kb) (NEED HYPERLINK ADDED)

Once you download the file it will need to be unzipped. Saving the unzipped file in the correct location is key, so then it will be available to you when you make your PDF in Adobe Creative Suite programs. Keep in mind that your system may be set up differently, but below are a few examples of where the file should be saved.

For Mac:



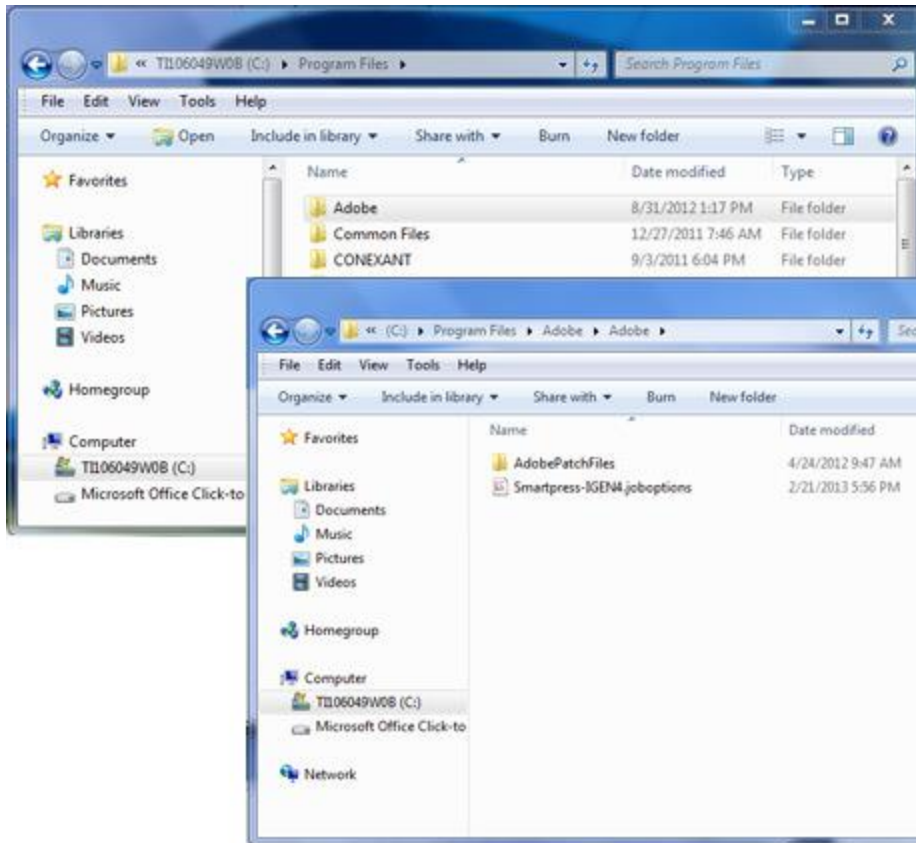
Move the “P4LC.joboptions” to your Applications folder where the Adobe Folder is located. Make sure the file is located in the Adobe folder.

If this does not work, try this:

[username]/Library/Application Support/Adobe/Adobe PDF/Settings

Not all systems are set up the same, and depending on the software versions, locations can vary slightly.

For PC:



Move the “P4LC.joboptions” to Program Files folder where the Adobe Folder is located. Make sure the file is located in the Adobe folder.

If the above does not work, see the path below:

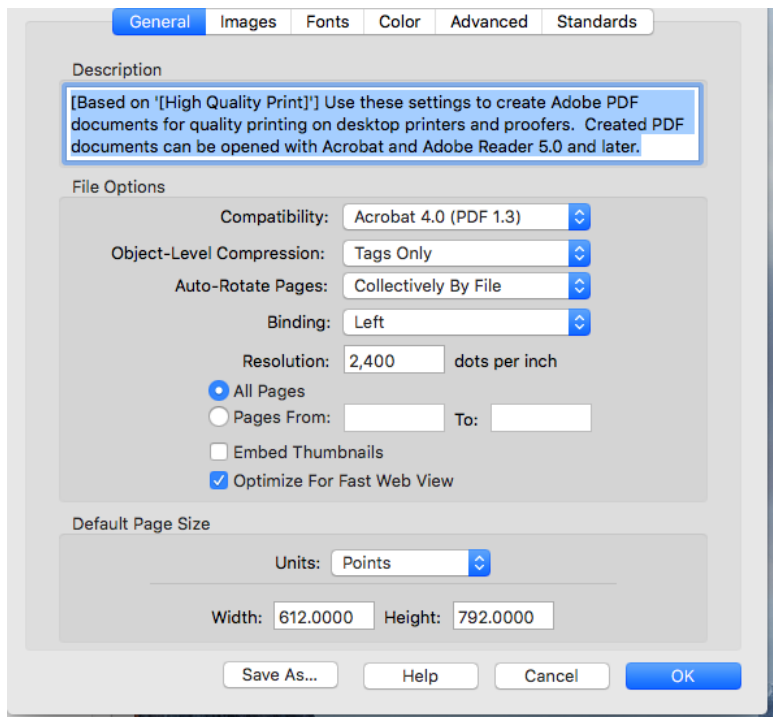
C:\Documents and Settings\All Users\Shared Documents\Adobe PDF\Settings

Keep in mind that your system may be set up differently, you may need to try a few different folders. These are general suggestions.

Advantages to Using P4LC Specific Job Options

What exactly does this new .joboptions file do? This .joboptions file has predetermined presets for your PDF that make printing your file with P4LC easy. The crop marks,

bleeds, output options, and compression are all defined for you. You will find this saving option in the PDF Preset dropdown.



Please Note: Keep in mind that this .joboptions file will only work in Adobe Creative Suite programs. Please reference our PDFs from Word and PDFs from Publisher sections below if you are using either of those.

PDF Guidelines

Here are more guidelines for making your PDF:

- If at all possible, create your PDF using Adobe Illustrator or InDesign. If you have Acrobat Standard or Acrobat Professional, you can also create high-quality PDFs using the Adobe PDF printer driver from almost any program.
- You can use the built-in PDF-making functionality of Microsoft Office 2007 for Windows or Adobe PDF printer driver.
- On the Macintosh, in any product other than Adobe Illustrator, Photoshop, or InDesign, use the Adobe PDF printer driver if you have it. Otherwise, your next

best option is to go to Print your file, click the PDF button, and choose **Save as PDF-X**. If you do not have the PDF-X option, please choose the highest print quality PDF.

- Please refer to “File Preparation” for instructions on how to save PDF’s from specific applications, using the Adobe PDF printer driver.

PDFs from Illustrator

PDFs from InDesign

PDFs from Photoshop

PDFs from Word

PDFs from Publisher

PDFs from LibreOffice

Other PDF Software

General Images Fonts Color **Advanced** Standards

Options

- Allow PostScript file to override Adobe PDF Settings
- Allow PostScript XObjects
- Convert gradients to smooth shades
- Convert smooth lines to curves
- Preserve Level 2 copypage semantics
- Preserve Overprint Settings
 - Overprinting default is nonzero overprinting
- Save Adobe PDF Settings inside PDF file
- Save original JPEG images in PDF if possible
- Save Portable Job Ticket inside PDF file
- Use Prologue.ps and Epilogue.ps

Document Structuring Conventions (DSC)

- Process DSC comments
 - Log DSC warnings
 - Preserve EPS information from DSC
 - Preserve OPI comments
 - Preserve document information from DSC
 - Resize page and center artwork for EPS files

Save As...

Help

Cancel

OK

General Images Fonts **Color** Advanced Standards

Adobe Color Settings

Settings File: ▾

Color Management Policies

▾

Document Rendering Intent: ▾

Working Spaces

Gray: ▾

RGB: ▾

CMYK: ▾

Preserve CMYK values for calibrated CMYK color spaces

Device-Dependent Data

Preserve Under Color Removal and Black Generation

When transfer functions are found: ▾

Preserve Halftone Information

Save As...

Help

Cancel


OK

General Images **Fonts** Color Advanced Standards

Embed all fonts

Embed OpenType fonts

Subset embedded fonts when percent of characters used is less than: %

 Only fonts with appropriate permission bits will be embedded

When embedding fails:

Embedding

Font Source

.AlBayanPUA
.AlBayanPUA-Bold
.AlNilePUA
.AlNilePUA-Bold
.AlTarikhPUA
.BaghdadPUA
.BeirutPUA
.DamascusPUA
.DamascusPUABold
.DamascusPUALight
.DamascusPUAMedium
.DamascusPUASemiBold
.DecoTypeNaskhPUA
.DiwanKufiPUA

Add->

Add->

Always Embed Font

Never Embed Font

Add Name...

Remove

Save As...

Help

Cancel

OK

General

Images

Fonts

Color

Advanced

Standards

Color Images

Sampling: Bicubic Downsampling to 425 pixels per inch
for images above: 636 pixels per inch

Compression: Automatic (JPEG)

Image Quality: Maximum

Grayscale Images

Sampling: Bicubic Downsampling to 425 pixels per inch
for images above: 636 pixels per inch

Compression: Automatic (JPEG)

Image Quality: Maximum

Monochrome Images

Sampling: Bicubic Downsampling to 1,200 pixels per inch
for images above: 1,800 pixels per inch

Compression: CCITT Group 4

Anti-Alias to gray: Off

Policy

Save As...

Help

Cancel

OK

General Images Fonts Color Advanced Standards

Standard Reporting and Compliance

Compliance Standard: PDF/X-1a (Acrobat 5.0 Compatible)

When not compliant: Cancel job

If Neither TrimBox nor ArtBox are Specified

- Report as error
- Set TrimBox to MediaBox with offsets (Points):

Left: 36 Right: 36 Top: 36 Bottom: 36

If BleedBox is Not Specified

- Set BleedBox To MediaBox
- Set BleedBox To TrimBox with offsets (Points):

Left: 9 Right: 9 Top: 9 Bottom: 9

Default Values if Not Specified in the Document

Output Intent Profile Name: Coated GRACoL 2006 (ISO 12647-2: ?

Output Condition Identifier: ?

Output Condition: ?

Registry Name(URL): ?

Trapped: Insert False ?

Save As...

Help

Cancel

OK